

<b>Rock Cycle Terms</b>	<b>Definitions</b>
erosion p. 122	
Foliated/Foliation p. 136	
lithification p. 124	
bedding p. 126	
deposition p. 123	
igneous rock p. 99	
lava p. 99	
rock cycle p. 138	
sediments p. 121	
metamorphic/metamorphism p.133	
Magma p. 100	
Crystallization (fractional) p. 103	

# Parts of the Rock Cycle



## **Background:**

Slowly, but surely, rocks in the earth's crust change. The rock cycle illustrates some ways rock changes from one form to another, recycling rock over time. The rock cycle is a means of illustrating the interrelationships of rocks. It is not as complicated as it may appear at first. Complete the rock cycle diagram by placing the given information in the correct location on the diagram. Answer the questions that follow.

There are three types of rock:

- A. Igneous
- B. Metamorphic
- C. Sedimentary

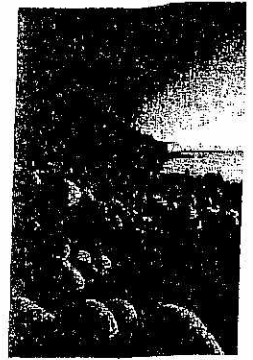
There are many processes in the rock cycle which are continually at work, changing and recreating rocks. These processes include:

- D. melting
- E. cooling and crystallization of magma to form igneous rocks
- F. weathering and erosion
- G. sediments form sedimentary rock
- H. heat and pressure to form metamorphic rock.

Each type of rock can go through any of these processes.

## **Activity:**

- 1.) Obtain a copy of Parts of the Rock Cycle - Student Activity.
- 2.) The steps of the rock cycle are listed on the following page. Use the information provided in the Background and in your text book to create your own diagram of the rock cycle. Use arrows to show the relationships between the different rock types, as well as the different processes that link them.



# Parts of the Rock Cycle- Student Activity

Directions: Use these steps to create a diagram of the rock cycle.

Use pencil!

- D. melting to form magma
- E. cooling and crystallization
- F. weathering and erosion
- G. sediments
- H. heat and pressure

Place the following terms inside the correct "rock."

- Intrusive
- Extrusive
- Foliated
- Deposition
- Bedding

Place the following rock types/names inside the correct "rock."

- limestone
- coal
- marble
- gneiss
- granite
- pumice

# The Rock Cycle

Name \_\_\_\_\_

Date \_\_\_\_\_

